

Increasing Resilience of Smallholders with Multi-Platforms Linking Localized Resource Sharing



Prof. Congduc Pham
<http://www.univ-pau.fr/~cpham>
Université de Pau, France

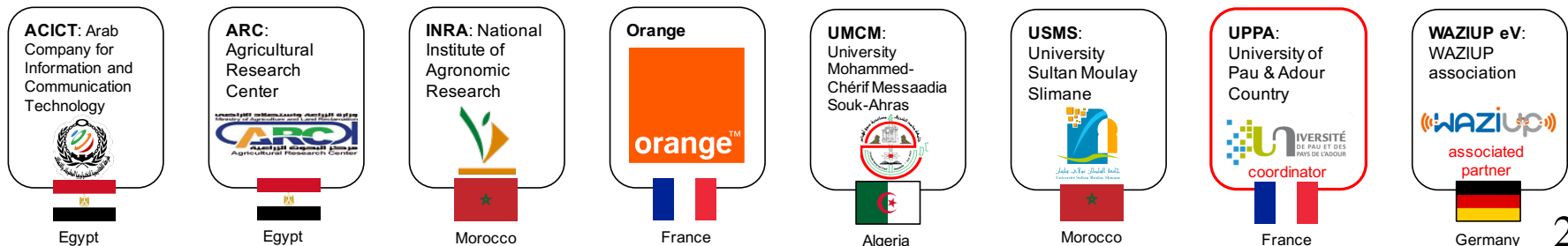


- Partnership for Research and Innovation in the Mediterranean Area
- R&I approaches to improve usage of resources
- **Call: Section 2 Multitopic 2021**
- Thematic Area 3-Agrofood chain

<https://prima-med.org/>



- Topic 2.3.1 Increasing the resilience of small-scale farms to global challenges and COVID-like crisis by using adapted technologies, smart agri-food supply chain and crisis management tools



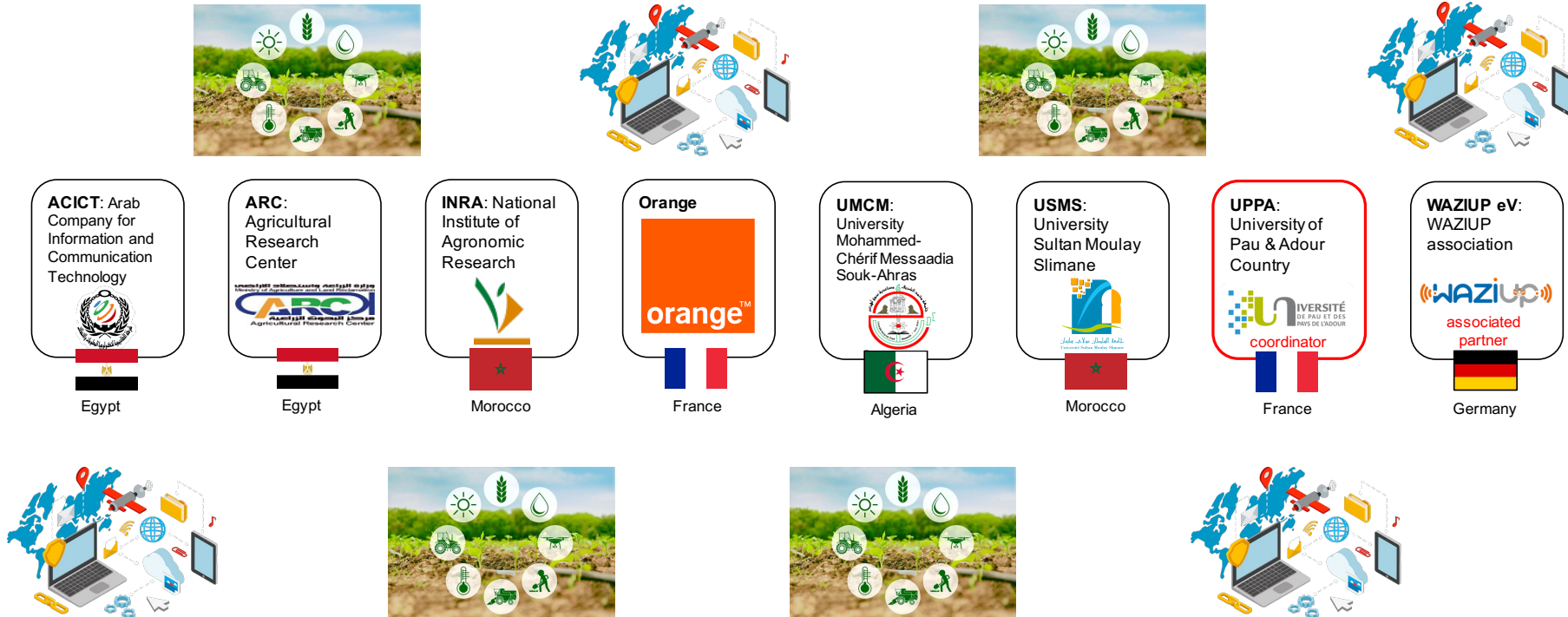
Towards more frequent crisis?



The #COVID19 pandemic is disrupting livelihoods, food supply chains, and people's access to food and basic services.



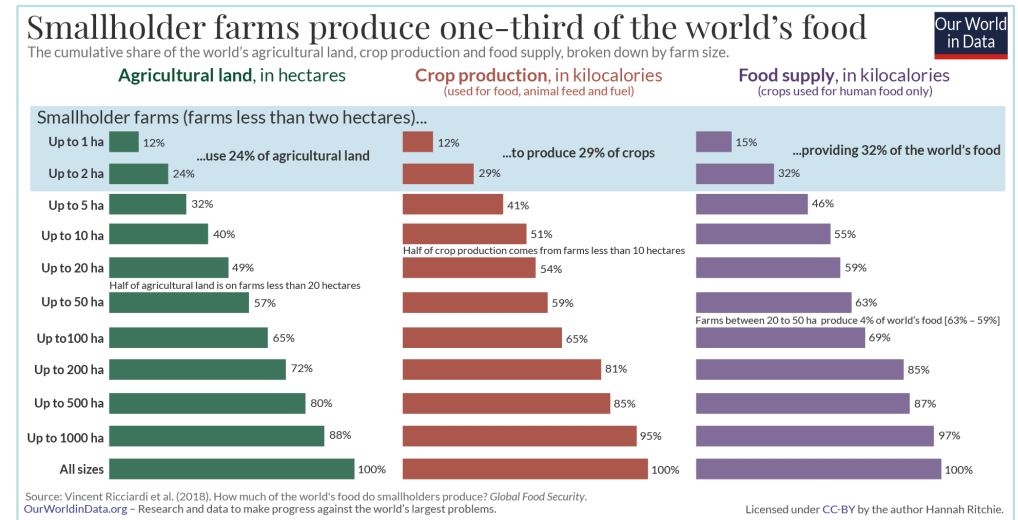
A transdisciplinary project



**TO INCREASE THE RESILIENCE OF
FARMERS TO GLOBAL CHALLENGES**

Smallholders – up to 2ha

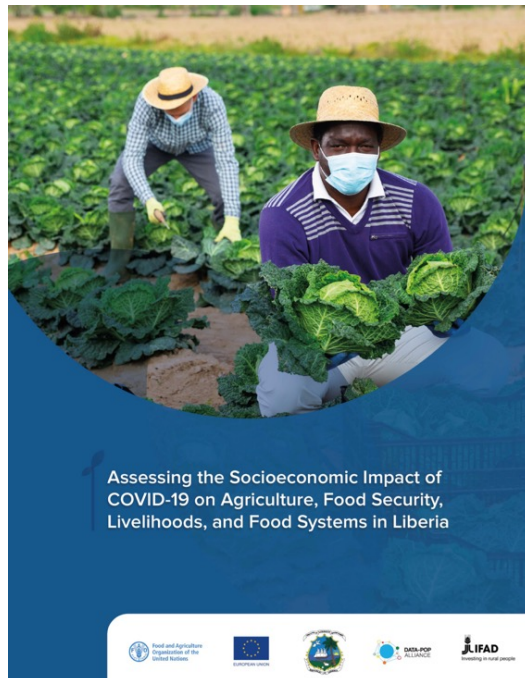
- Most (84%) of the world's 570 million farms are smallholdings
- Provide about 32% of world food supply, on about 24% of agriculture land
- <5ha would increase world food supply to 46% on 32% of land
- Smallholder farmers: **first to be impacted by climate change, resource scarcity & unexpected crises.** They are very economically fragile!



<https://ourworldindata.org/smallholder-food-production>

Increase resilience?

- Digital smart technologies can bring new tools & services that could improve the resilience of the entire food supply chain
- **However, " what services" and " how to implement them" are still to be discussed and investigated!**



RESILINK's motivations

- ⦿ Increasing the resilience of farmers is a multidimensional challenge
- ⦿ **RESILINK** will increase farmer's resilience by providing **continuity of access** to both resources and markets in crisis situations
- ⦿ Promotes & **discover local resources** that are less impacted by restrictions on movements
- ⦿ Generalizing local resource sharing approach will enable smallholders to maintain their activity thus **securing their revenues**

IS IT ANOTHER e-COMMERCE or ONLINE SHOPPING PLATFORM?

Targeting farmers, but...

- ⦿ Not only an exchange platform for farmers...
- ⦿ **All actors of the agri-food value chain** need to be engaged!
 - ⦿ Government Agencies, Agriculture Advisors
 - ⦿ Agriculture Cooperatives
 - ⦿ Local Administrations
 - ⦿ Regulators
 - ⦿ ...

WHY?

**BECAUSE IN CRISIS SITUATION, FAST DISSEMINATION &
ACCESS TO INFORMATION IS CRITICAL!**

RESILINK's approach

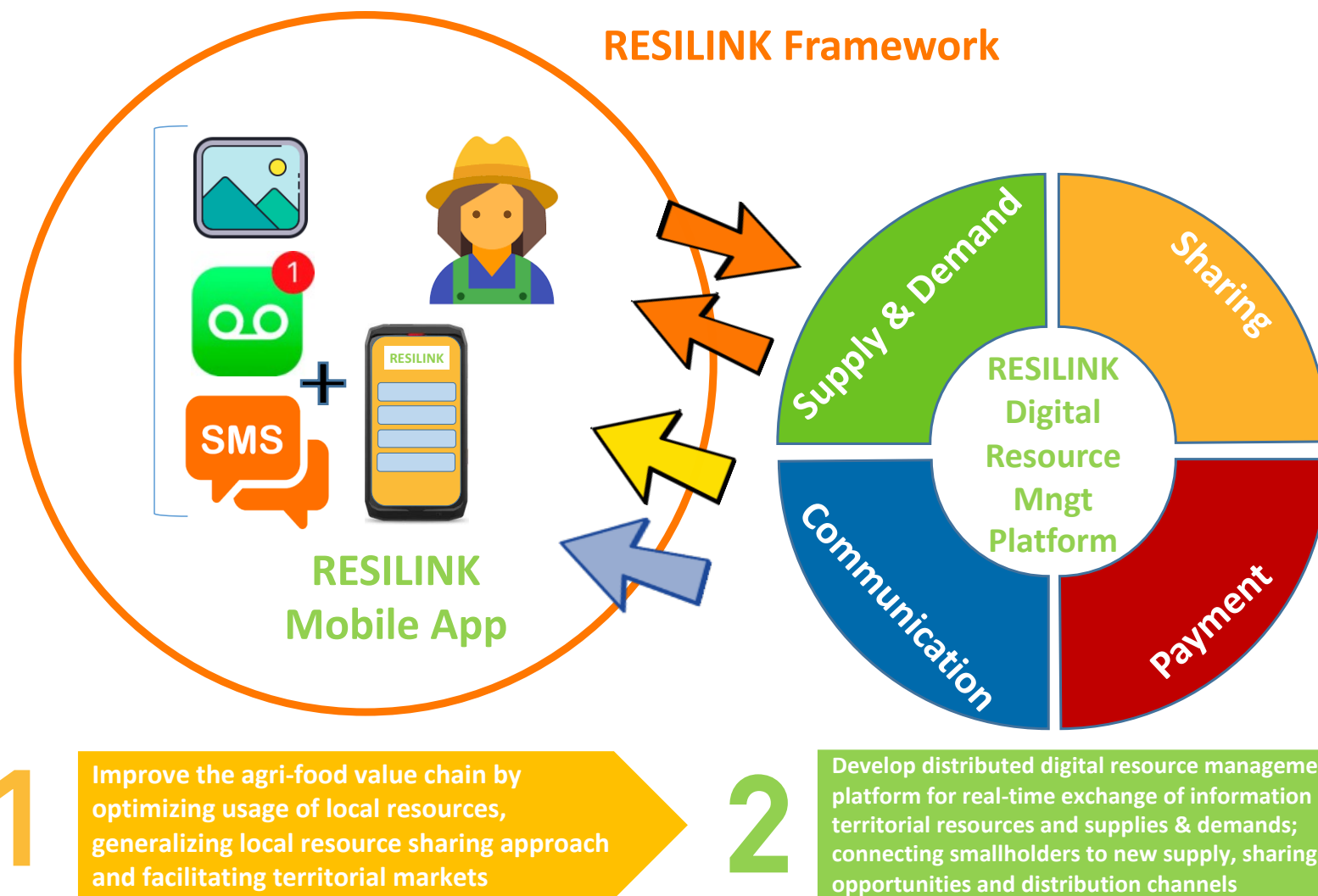
RESILINK will increase farmer's resilience by providing **continuity of access** to both resources and markets in crisis situations

Promotes & links **local resources** that are less impacted by restrictions on movements

Generalizing local resource sharing approach will enable smallholders to maintain their activity thus **securing their revenues**

- ④ A distributed digital platform will enable **real-time exchange of information** on territorial resources and supplies & demands; **connecting farmers to new supply**, sharing opportunities and distribution channels

RESILINK's digital platform

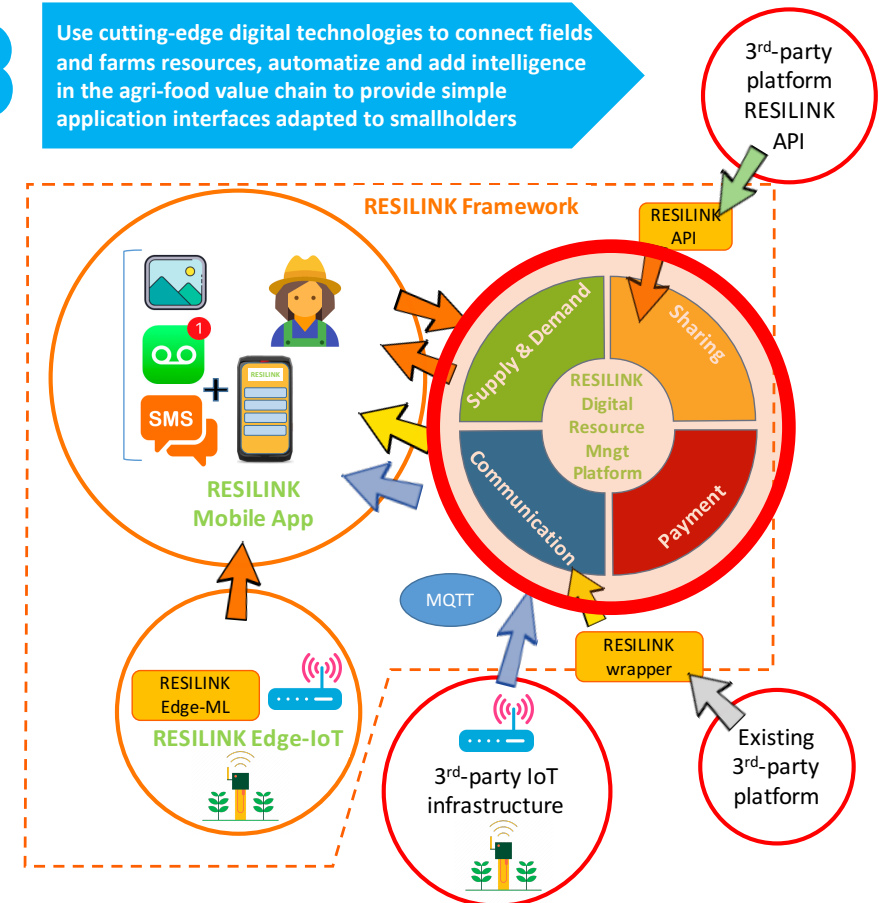


IT IS ALSO A RESEARCH PROJECT!

- Will provide an **open architecture and API** to seamlessly integrate third-party platforms into **comprehensive dashboards/portfolios**
- Incrementally add disruptive technologies such as **Internet-of-Thing (IoT), Edge Computing, Linked-Data and AI-based Decision Support System (DSS)** for information sharing automation in agriculture/farming processes

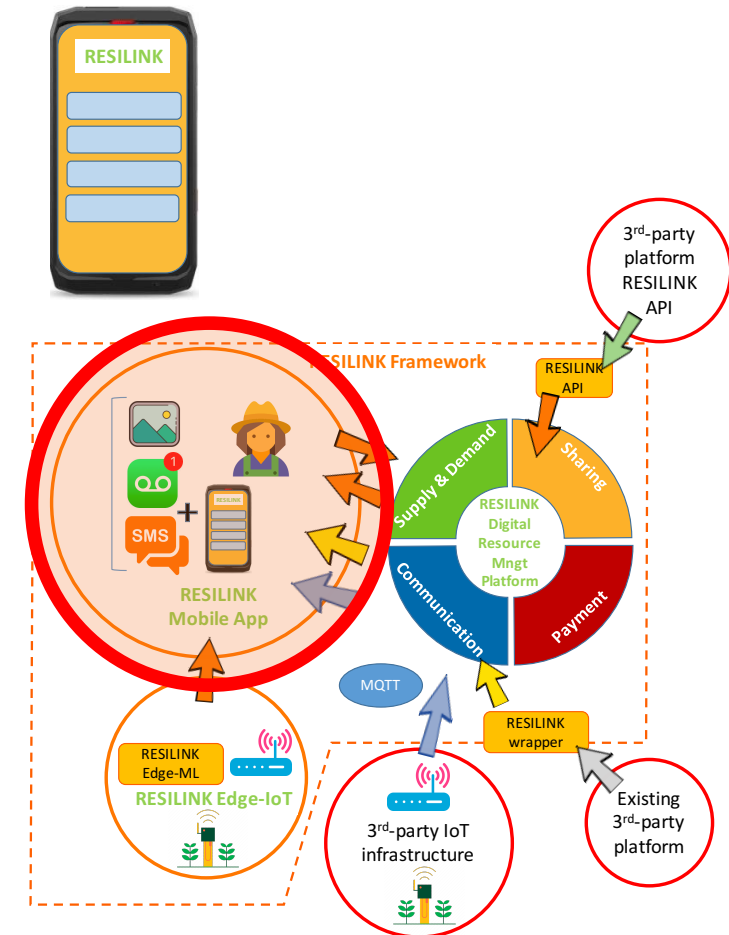
3

Use cutting-edge digital technologies to connect fields and farms resources, automatize and add intelligence in the agri-food value chain to provide simple application interfaces adapted to smallholders



RESILINK's mobile application

- The mobile application will be the **main interface to simply, quickly and intuitively interact** with the RESILINK digital resource management platform
- The user interface will be adapted to the smallholder communities and **simple interaction methods can also be supported** such as SMS, voice attachment, pictures, etc.
- Will provide subscription service to **real-time information** channels from agri-food actors
- Reception of notifications for **correlated local resources** can be enabled, in addition to resources matching explicit requests



It is a multi-actors R&I project

What target?

What services?

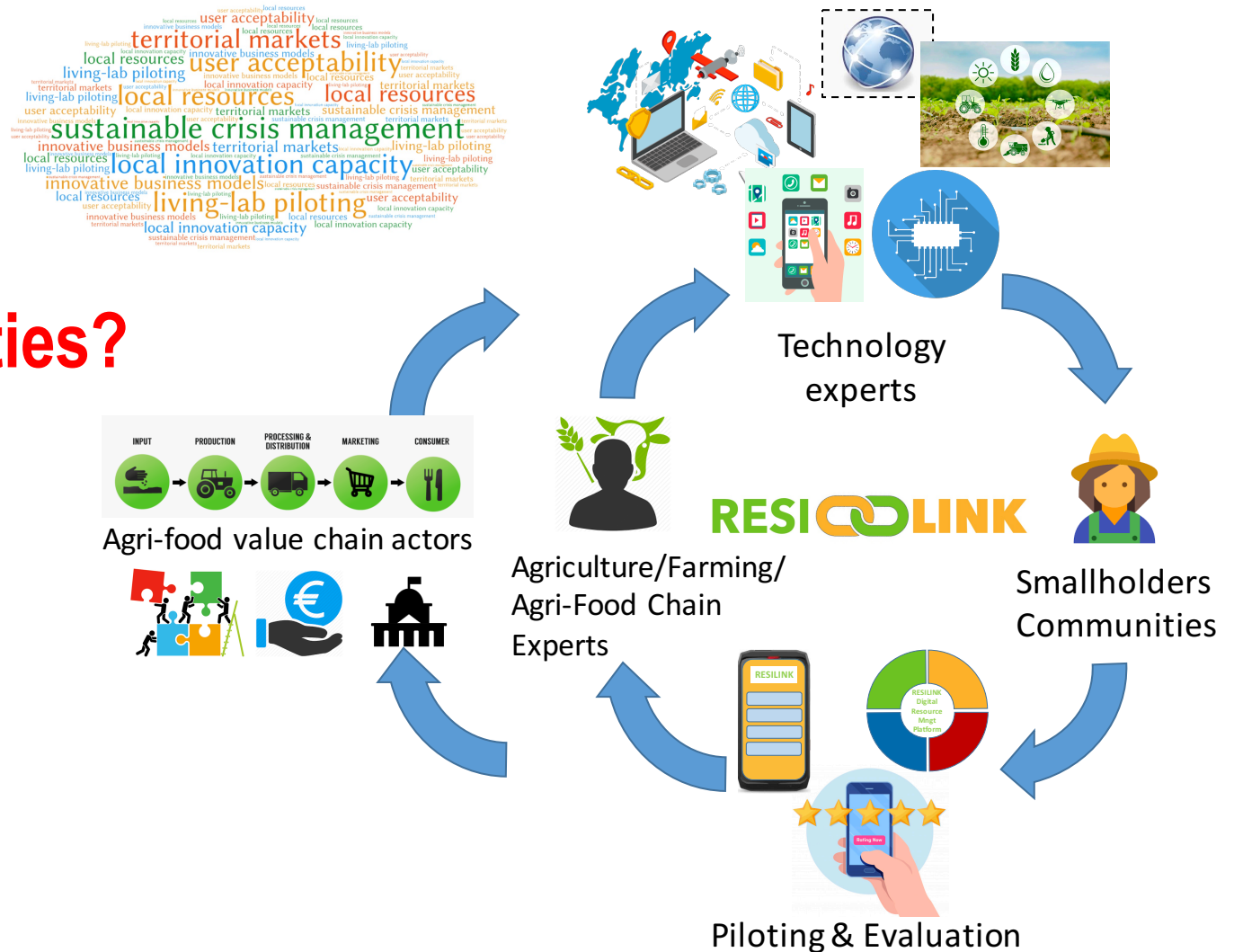
What functionalities?

Synergy?

Acceptability?

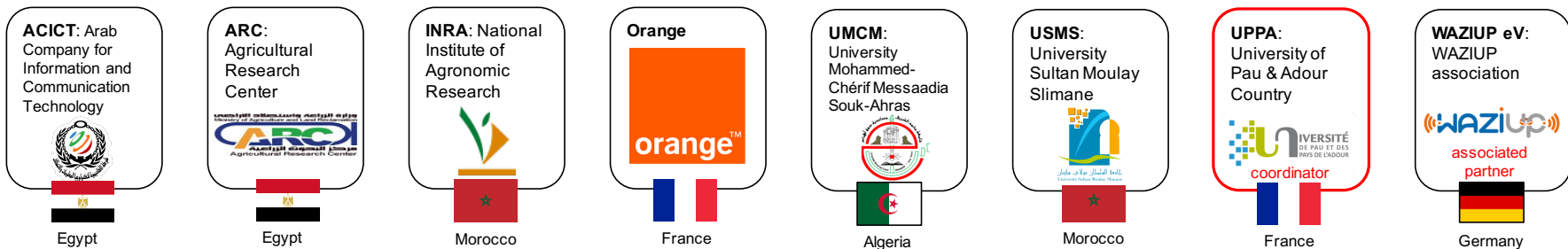
Openness?

Sustainability?

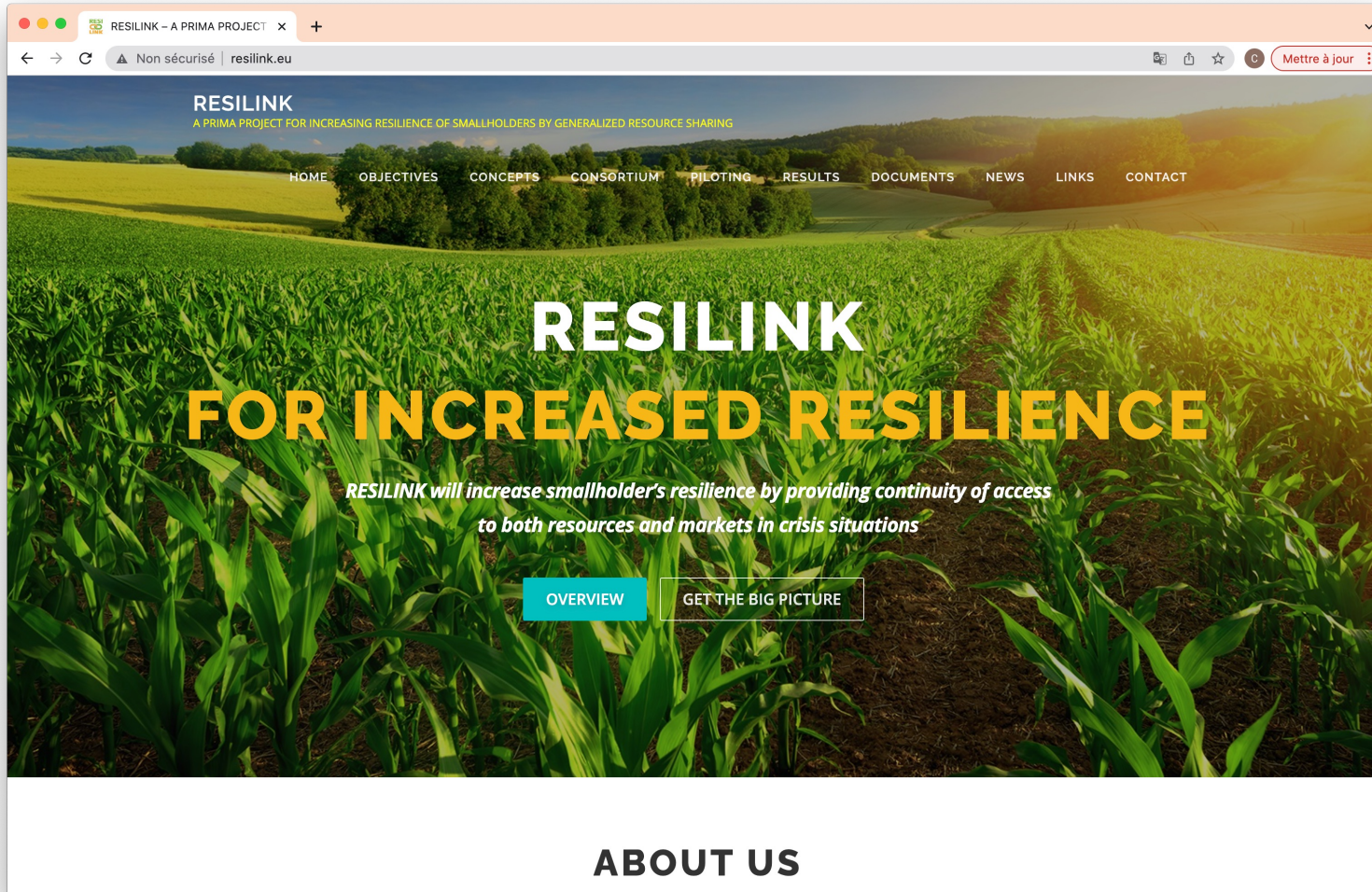


Project basic info

- 7 partners: Algeria (1), Egypt (2), France (2), Morocco (2)
- 1 associated partner: Germany (1)
- 48 months
- Start date: June 1st, 2022
- End date: May 31st, 2026



Web site: <https://resilink.eu>



<https://resilink.eu>

Increasing Resilience of Smallholders with Multi-Platforms Linking Localized Resource Sharing

